



DOT PEEN

MARKING



Since its early years, **Automator** has always focused on industrial marking. Always imagining, planning and providing the most advanced technologies for this industry.

AUTOMATOR: BRINGING THE FUTURE TO THE INDUSTRIAL MARKING SEGMENT

How can one of our customers benefit from our 80 years of experience?

- 80 years in business means we have an extensive **KNOWLEDGE** of marking applications in all market segments and all related industries.
- 80 years in business means a huge **EXPERTISE** in pre-sales activities, especially for understanding customer needs and the ability to help qualify the solution best suited for the job.
- 80 years in business means that all Automator products are the result of **CONTINUOUS IMPROVEMENTS**, technological stratification, upgrades and innovation.
- 80 years in business means a huge **EXPERTISE** in after-sales activities, such as education and support.
- 80 years in business means **STABILITY!** Automator will always be beside you, helping you in all your marking needs!



1940 | OGGI

80
1940-2020

Automator provides quality designs, world class production and sales of industrial marking machines and systems worldwide since 1940.

In 2020, Automator celebrated its 80th year in business. This means 80 years of knowledge in International Industrial Production in all market segments and all product marking applications! 80 years in satisfying customers with excellent pre and after-sales support! 80 years in Research & Development for machine innovation. With emphasis on inventing new technologies, improving existing technologies, and contributing year after year to push the whole industrial part marking sector towards new goals and new horizons.



1940 - 1950

MECHANICAL MACHINES



1960 - 1970

PNEUMATIC AND
ELECTRIC-PNEUMATIC
IMPACT MACHINES



1980

DOT PEEN ELECTRONIC
MARKERS



2000

LASER MARKER

Our technologies

Automator Marking Systems provides all industrial marking technologies, Traditional mechanical machines, pneumatic or electric-pneumatic Impact, Roll Marking, Hot Marking, and state-of-the-art technologies for Laser, Dot Peen and Scribe Marking.



LASER
MARKING



DOT PEEN
MARKING



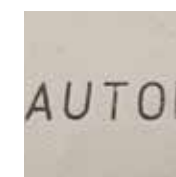
IMPACT
MARKING



SCRIBE
MARKING



ROLL
MARKING



HOT FOIL
MARKING



CHEM ETCH
MARKING

FLAWLESS RESULTS ON ALL MATERIALS

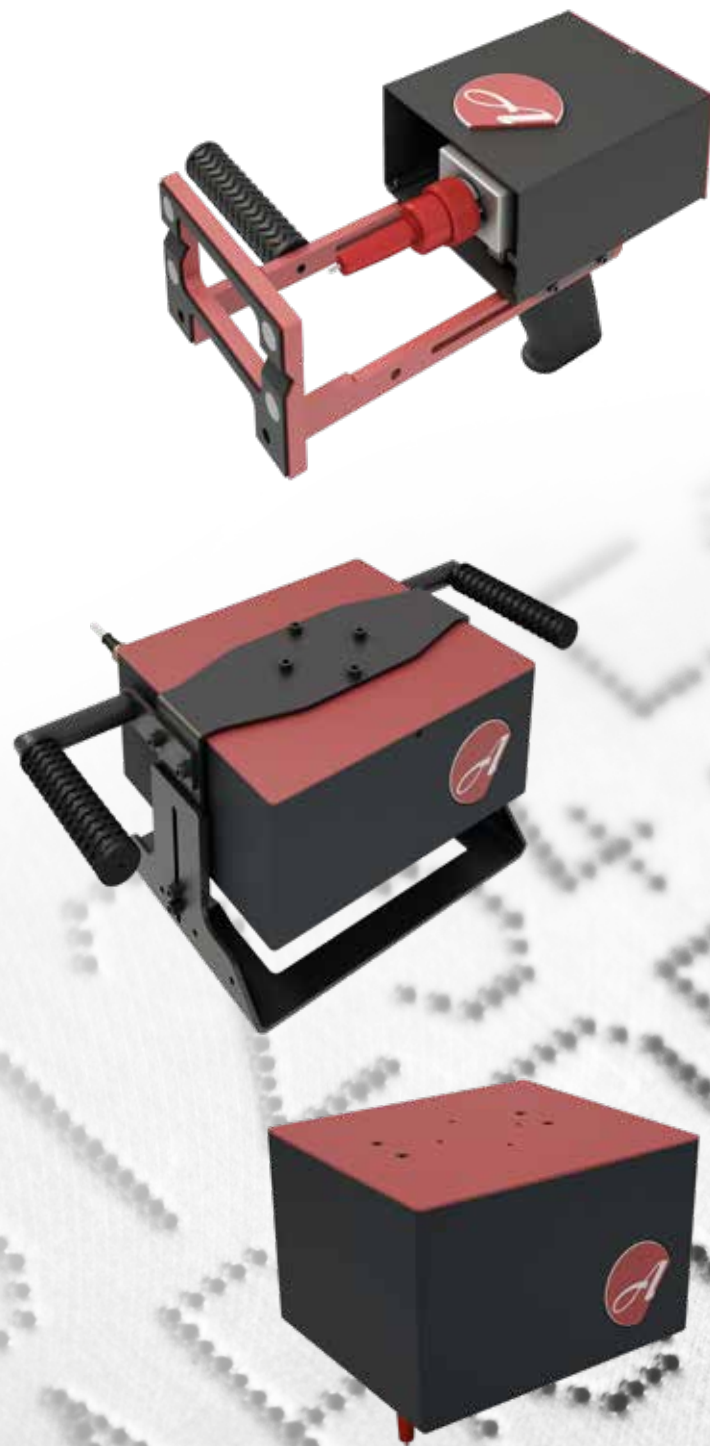


ALL KINDS OF DOT PEEN MARKERS, FOR ALL CLIENTS NEEDS

Compact devices and systems for bench, portable or integration applications. Whether it is a dot peen controlled or Vibro application, features like speed and depth allow to mark on different materials such as metals, hard plastics, alloys, burnished metals, anodized, painted, wood, paper or even glass. Our dot peen markers are the easiest to use thanks to our proprietary software with a super-flexible interface, that allows an absolute graphic freedom merit: the management of serial numbers, geometric figures, fixed or variable texts, logos, Datamatrix and QR codes in various formats.

All Automator dot peen marking systems and software are managed by our innovative AC 500 universal controller with a 7" touch screen display: easy to install and use, allows the operator to work with simplicity and speed, even without knowledge specifics of drawing or design programs.

It is also possible to create programs on PC, which can be easily transferred to the AC500 controller via USB connection.



HOW TO CHOOSE THE PERFECT DOT PEEN SOLUTION?

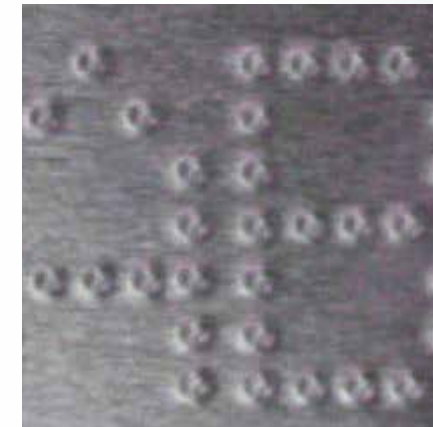
There are two main criteria for choosing: the desired result and the most suitable marking area.

The result depends on the type of marking: Automator dot peen markers allow you to carry out marking in a controlled dot, vibrated dot, in pneumatic or electric mode, on the surface or in depth.



VIBRATING DOT PEEN

Characters are marked with a small pin while vibrating. Highly recommended for fast marking with very high quality needs.



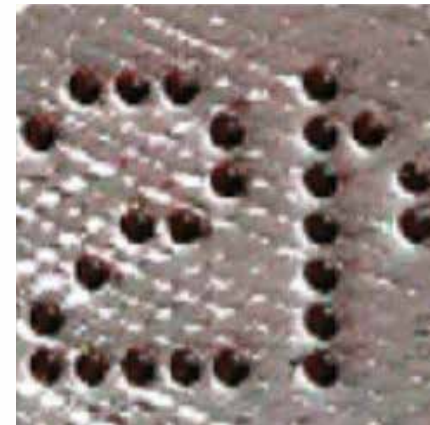
ELECTRIC DOT PEEN

The pin is moved electrically by drive and return electric spring solenoid. Air not required. Recommended for high quality needs.



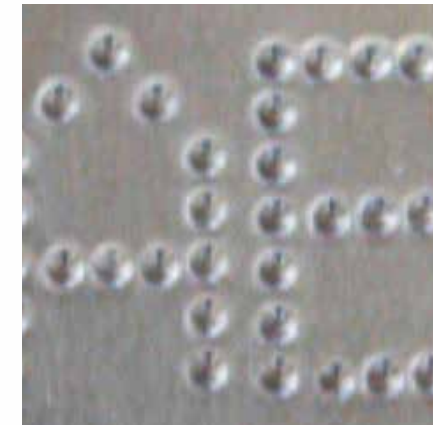
PNEUMATIC DOT PEEN

The Pin is moved automatically by opening and closing the drive and return air. Recommended for marking on irregular and rough surfaces.



DEEP DOT PEEN

The Air Solenoid has an increased capacity. Specialized pins are required for deep markings on the most resistant materials.



CONTROLLED DOT PEEN

Font characters are created with possibility to specify the density of the dots to be marked from 0 to 80 pixel/cm. Recommended for deep marking.



SCRIBE MARKING

Markings are made by striking the surface and removing the material for deep and silent marking.

AUTOMATOR IS CERTIFIED:



CISQ
ITALIAN CERTIFICATION
OF COMPANY
QUALITY SYSTEMS



ISO 9001
IQ NET 2768/5



MANAGEMENT
SERVICE ISO
9001/2008
ICIM (2768/5)

AUTOMATOR IS A MEMBER OF:



UCIMU
ITALIAN ASSOCIATION
OF MACHINE TOOLS
MANUFACTURERS



AIDAM
ITALIAN ASSOCIATION
OF AUTOMATION AND
MECHATRONICS

AC500

DOT PEEN AND
SCRIBE UNIVERSAL
CONTROLLER:



- External power supply
- Lines, circles, arcs
- Serial numbers and codes
- TTF fonts available
- USB port
- More than 40 languages available
- Motorized Theta and Z axis
- Memory display

OPTIONAL EXTERNAL COMMUNICATIONS:



Names and brands of these protocols are patented.



- Multilanguage virtual keyboard
- 7" colours touchscreen
- Printer connection available
- Upload /download files
- QR codes and Data Matrix
- I/O signals
- Alarms history
- 64 MB flash memory
- External reader
- Importable DXF-BMP files
- Remote and programmed assistance

Standard certifications for UE (CE), USA (International Technology Equipment Safety part 1: general requirements, 609501) and Canada (International Technology Equipment Safety part 1: general requirements Amendment 1:2011, Amd. 2: 2014, CSA C22.2#60950-1)



AN ACTUALLY UNIVERSAL CONTROLLER



A complete **Machines database** of configurations for all marking heads makes our AC500 control perfect for driving almost all dot peen machines on the market, have a try!

CREATE YOUR OWN FONT







Discover our **Font creator**!
The software application for AC500 that allows you to create matrix and vector fonts from scratch.
Intuitive and easy to use.



**NEED MORE?
DISCOVER THE
AUTOMATOR
STORE!**

A place for buying and downloading Apps for additional features, including:

- Management of our software from the network
- Enabling for industrial communication protocols
- Customization of the AC500 software
- Activation of multiple dot marking mode for deeper or more defines markings on metals

MATRIX MULTIPLE MARKINGS Allows to mark multiple objects in series on a pallet.	OPTIONAL EXTERNAL AXIS  Up to 32 external optional axis available.	RESIDUAL MEMORY  It displays the memory still available and the one already used.	IMPORTABLE/EXPORTABLE DXF, BMP FILES Upload and download graphic files to create markings from them.	SERIAL NUMBERS AND AUTOMATIC USERS FLAG CODES Automatic flag codes including serial numbers, dates, shifts, etc ...	DATAMATRIX, QR CODE AND GS1 Possibility of marking 2D codes (QR and Datamatrix) and GS1 for components traceability.
ALARMS AND USERS LOGS HISTORY  It records all errors that occurred during the use of the machine and the accesses of different operators.	VIRTUAL KEYBOARDS  They can be displayed and used to create text to be marked. In different languages.	REMOTE SUPPORT AND PROGRAMMES SCHEDULED MAINTENANCE It allows our technicians to assist your operators in remote sessions and to schedule any programmed maintenance.	SOFTWARE E FIRMWARE BACKUP AND UPDATES Automatic and scheduled updates, as well as restore backups of files, settings and settings.	FULL CONNECTIVITY • I/O • RS232 • Ethernet PC / TPC / IP • Fieldbus, Modbus • Bluetooth, Canopen, CCLink	OPTIONAL EXTERNAL COMMUNICATIONS • Bluetooth • CANopen • CC-Link • Profibus • Profinet • Modbus • Ethernet/IP • DeviceNet

AC250

DOT PEEN CONTROLLER



- External power supply
- Lines, circles, arcs
- Serial numbers and codes
- TTF fonts available
- USB port
- More than 40 languages available
- Ethernet cable PC connections
- Arcs



UNIVERSAL AND COST EFFECTIVE

The AC250 controller can work with a PC or in a stand-alone mode with our MarkAlone™ technology. It can manage up to 8 programs.



- Ethernet I/O
- Head connection cable
- QR codes and Data Matrix
- I/O signals
- RS232
- 64 MB flash memory
- Fuse
- Importable DXF-BMP files

Standard certifications for UE (CE), USA (International Technology Equipment Safety part 1: general requirements, 609501) and Canada (International Technology Equipment Safety part 1: general requirements Amendment 1:2011, Amd. 2: 2014, CSA C22.2#60950-1).



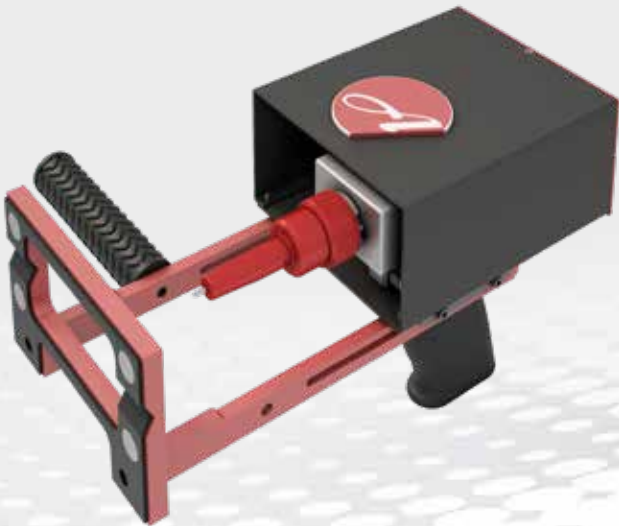
ADP 2560

Dot peen marking on anodized aluminium, burnished metals, cardboards, ceramic, ebony, wood, metals and alloys, hard plastic, polycarbonate, silicon, painted materials, and glass.

Thanks to the very versatile software and the available I / O signals, the ADP model is particularly suitable for industrial integrations, network systems, data customization and production controls.



FOR INTEGRATION



PORTABLE



OPTIONAL:

- Base and column available for use in the "benchtop" version.
- Standard height 500 mm.
- Other heights available upon request



TWO UNIVERSAL CONTROLLERS AVAILABLE:

- AC500 7 "color graphic touch screen with talking icons
- Ethernet, RS232-485, Usb, I / O connections
- AC250 basic version, with connection to PC or stand-alone up to 8 programs



USER FRIENDLY MULTILINGUAL SOFTWARE:

- Management of serial numbers, texts, basic geometric figures, shift and date codes in various formats
- TTF font, 5 × 7 - 7 × 11 - 11 × 16 dot font, OCRA - OCRB, file upload / download, import
- Dxf - Bmp, Query in txt and Csv, Datamatrix and Qrcode, scheduled maintenance
- Remote maintenance, 64MB internal hard memory



AVAILABLE PINS	
Vibrated dot	3 mm 4 mm
Controlled dot	3 mm 3 mm XL 3 mm stroke + 20 mm 6 mm 6 mm XL
Vibrated dot cartridge	3 mm with spring 4 mm with spring
Cartridge controlled dot	3 mm 3 mm stroke + 20 mm 6 mm 12 mm



DOT PEEN MARKING SYSTEM WITH:

- Pneumatic pin with spring return, and electric pin with solenoid
- Marking version with controlled dot for deep and fast marking or vibrating dot for fast and high quality marking
- 6 different standard pins available for the CONTROLLED DOT version
- 2 different standard pins for the VIBRATING version
- 1 electric pin

ADP2560 - FOR INTEGRATION	
Dimension	126x174.5x80 mm
Weight	3 Kg
Material	Glass Plastic Metals Anodized Painted Paper / Cardboard
Certifications	ISO 9001, ISO 45100

ADP2560P - PORTABLE	
Dimension	115x350x216 mm
Weight	3,4 Kg
Material	Plastic Metals Other materials
Certifications	ISO 9001

ADP2560B - BENCHTOP	
Dimension	409x618x315 mm
Weight	23 Kg
Material	Plastic Metals Gold / Silver / Palladium Other materials
Certifications	ISO 9001

ADP 2560BA

FREEDOM OF ACTION

Automator ADP2560 BA is the new Automator’s battery-powered portable dot peen machine for marking all metal surfaces in any wireless working environment with no connections to external controllers. Perfect for marking larger components or inside construction sites and outdoor spaces. Fast, powerful, reliable.



CONTROLLER INTEGRATED IN THE MACHINE:

Integrated controller with 4" touch screen that allows you to easily operate without the need for connection cables with external units.

USER FRIENDLY MULTILINGUAL SOFTWARE:

- Management of serial numbers, texts, basic geometric figures, shift and date codes in various formats
- TTF font, 5 × 7 - 7 × 11 - 11 × 16 dot font, OCRA - OCRB, file upload / download, import
- Dxf - Bmp, Query in txt and Csv, Datamatrix and Qrcode, scheduled maintenance
- Remote maintenance, 64MB internal hard memory



AVAILABLE PINS	
Vibrated dot	4 mm

BATTERIES	
Batteries type	8 V
Charging time	90 minutes
Autonomy	2 to 24 hours, depending by the usage



DOT PEEN MARKING SYSTEM WITH:

- Electric pin without the need for cables or compressed air
- Controlled dot mode for deep and precise markings
- Marking tip easy manual setting
- Pair of 18V batteries, with fast charging
- Set of optional standoffs to facilitate marking operations

ADP2560 BA	
Dimension	136x266x304 mm
Weight	3 Kg
Material	Glass Plastic Metals Anodized Painted Paper / Cardboard
Certifications	ISO 9001, ISO 45100



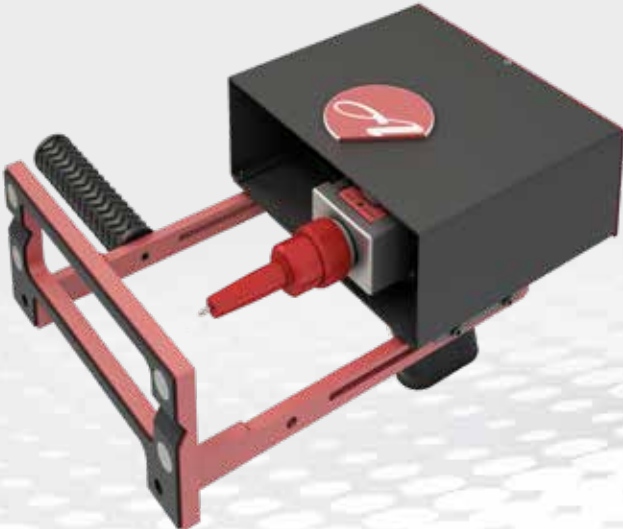
ADP 25120

Dot peen marking on anodized aluminium, burnished metals, cardboards, ceramic, ebony, wood, metals and alloys, hard plastic, polycarbonate, silicon, painted materials, and glass.

Thanks to the very versatile software and the available I / O signals, the ADP model is particularly suitable for the industrial integration, network systems, data customization and production controls.



FOR INTEGRATION



PORTABLE



OPTIONAL:

- Base and column available for use in the "benchtop" version.
- Standard height 500 mm.
- Other heights available upon request



TWO UNIVERSAL CONTROLLERS AVAILABLE:

- AC500 7 "color graphic touch screen with talking icons; AC250 basic version
- Ethernet, RS232-485, Usb, I / O connections
- Working mode with vibrated dot for high quality markings or with controlled dot for deep markings

USER FRIENDLY MULTILINGUAL SOFTWARE:

- Management of serial numbers, texts, basic geometric figures, shift and date codes in various formats
- TTF font, 5 × 7 - 7 × 11 - 11 × 16 dot font, OCRA - OCRB, file upload / download, import
- Dxf - Bmp, Query in txt and Csv, Datamatrix and Qrcode, scheduled maintenance
- Remote maintenance, 64MB internal hard memory



AVAILABLE PINS	
Vibrated dot	3 mm 4 mm
Controlled dot	3 mm 3 mm XL 3 mm stroke + 20 mm 6 mm 6 mm XL
Vibrated dot cartridge	3 mm with spring 4 mm with spring
Cartridge controlled dot	3 mm 3 mm stroke + 20 mm 6 mm 12 mm



DOT PEEN MARKING SYSTEM WITH:

- Pneumatic pin with spring return, and electric pin with solenoid
- Marking version with controlled dot for deep and fast marking or vibrating dot for fast and high quality marking
- 6 different standard pins available for the CONTROLLED DOT version
- 2 different standard pins for the VIBRATING version
- 1 electric pin

ADP25120 - FOR INTEGRATION	
Dimension	199x174.5x80 mm
Weight	4 Kg
Material	Glass Plastic Metals Anodized Painted Other materials
Certifications	ISO 9001

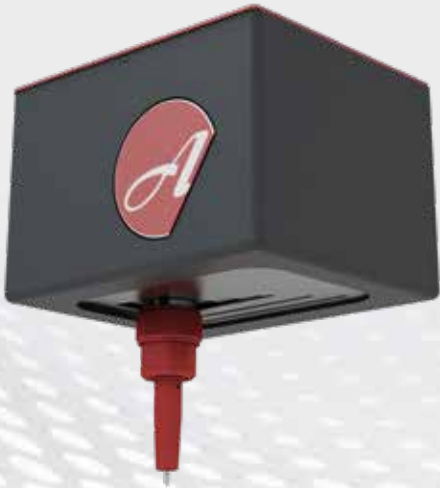
ADP25120P - PORTABLE	
Dimension	198x322x216 mm
Weight	4,4 Kg
Material	Plastic Metals Painted Other materials
Certifications	ISO 9001

ADP25120B - BENCHTOP	
Dimension	409x618x315 mm
Weight	24 Kg
Material	Plastic Metals Painted Paper / Cardboard Gold / Silver / Palladium
Certifications	ISO 9001

ADP 5090

Dot peen marking on anodized aluminium, burnished metals, cardboards, ceramic, ebony, wood, metals and alloys, hard plastic, polycarbonate, silicon, painted materials, and glass.

Thanks to the very versatile software and the available I / O signals, the ADP model is particularly suitable for the industrial integration, network systems, data customization and production controls.



FOR INTEGRATION



PORTABLE



OPTIONAL:

- Base and column available for use in the "benchtop" version.
- Standard height 500 mm.
- Other heights available upon request



TWO UNIVERSAL CONTROLLERS AVAILABLE:

- AC500 7 "color graphic touch screen with talking icons
- Ethernet, RS232-485, Usb, I / O connections
- AC250 basic version, with connection to PC or stand alone up to 8 programs

USER FRIENDLY MULTILINGUAL SOFTWARE:

- Management of serial numbers, texts, basic geometric figures, shift and date codes in various formats
- TTF font, 5 × 7 - 7 × 11 - 11 × 16 dot font, OCRA - OCRB, file upload / download, import
- Dxf - Bmp, Query in txt and Csv, Datamatrix and Qrcode, scheduled maintenance
- Remote maintenance, 64MB internal hard memory



AVAILABLE PINS	
Vibrated dot	3 mm 4 mm
Controlled dot	3 mm 3 mm XL 3 mm stroke + 20 mm 6 mm 6 mm XL 12 mm
Vibrated dot cartridge	3 mm with spring 4 mm with spring
Cartridge controlled dot	3 mm 3 mm stroke + 20 mm 6 mm 12 mm



DOT PEEN MARKING SYSTEM WITH:

- Pneumatic pin with spring return, and electric pin with solenoid
- Marking version with controlled dot for deep and fast marking or vibrating dot for fast and high quality marking
- 6 different standard pins available for the CONTROLLED DOT version
- 2 different standard pins for the VIBRATING version
- 1 electric pin

ADP5090 - FOR INTEGRATION	
Dimension	180x150x121 mm
Weight	5 Kg
Material	Plastic Metals Wood Paper / Cardboard Other materials
Certifications	ISO 9001

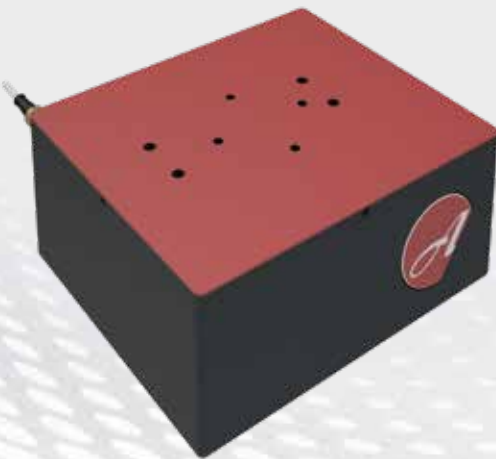
ADP5090P - PORTABLE	
Dimension	395x163x195 mm
Weight	7 Kg
Material	Plastic Metals Wood Paper / Cardboard Other materials
Certifications	ISO 9001

ADP5090B - BENCHTOP	
Dimension	420x271x120 mm
Weight	25 Kg
Material	Plastic Metals Wood Paper / Cardboard Other materials
Certifications	ISO 9001

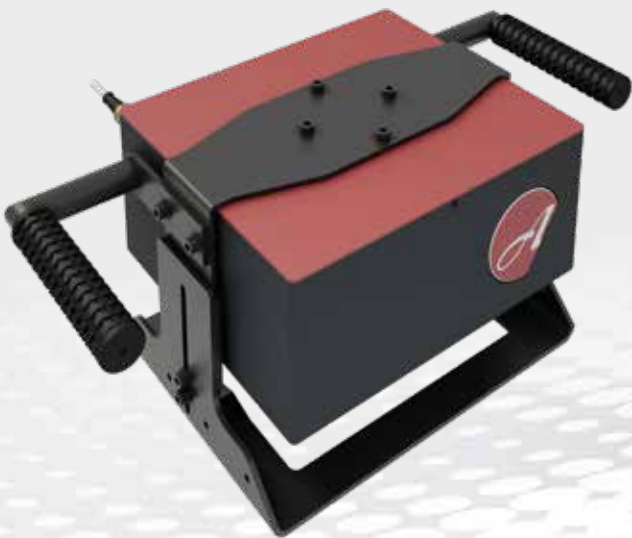
ADP 120160

Industrial marking machine.

Lightweight and compact, ADP120160 is the most versatile system for dot peen marking.



FOR INTEGRATION



PORTABLE



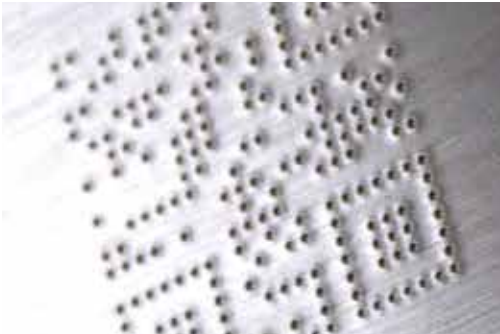
OPTIONAL:

- Base and column available for use in the "benchtop" version.
- Standard height 500 mm.
- Other heights available upon request



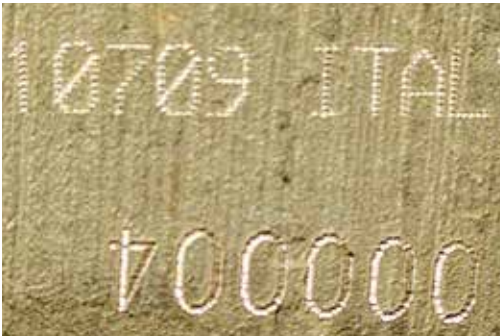
TWO UNIVERSAL CONTROLLERS AVAILABLE:

- AC500 7 "color graphic touch screen with talking icons
- Ethernet, RS232-485, Usb, I / O connections
- AC250 basic version, with connection to PC or stand alone up to 8 programs



USER FRIENDLY MULTILINGUAL SOFTWARE:

- Management of serial numbers, texts, basic geometric figures, shift and date codes in various formats
- TTF font, 5 × 7 - 7 × 11 - 11 × 16 dot font, OCRA - OCRB, file upload / download, import
- Dxf - Bmp, Query in txt and Csv, Datamatrix and QRcode, scheduled maintenance
- Remote maintenance, 64MB internal hard memory



AVAILABLE PINS	
Vibrated dot	3 mm 4 mm
Controlled dot	3 mm 3 mm XL 3 mm stroke + 20 mm 6 mm 6 mm XL 12 mm
Vibrated dot cartridge	3 mm with spring 4 mm with spring
Cartridge controlled dot	3 mm 3 mm stroke + 20 mm 6 mm 12 mm



DOT PEEN MARKING SYSTEM WITH:

- Pneumatic pin with spring return, and electric pin with solenoid
- Marking version with controlled dot for deep and fast marking or vibrating dot for fast and high quality marking - 6 different standard pins available for the CONTROLLED DOT version
- 2 different standard pins for the VIBRATING version
- 1 electric pin

ADP120160 - FOR INTEGRATION	
Dimension	365x271x125 mm
Weight	8,5 Kg
Material	Plastic Metals Wood Painted
Certifications	ISO 9001

ADP120160P - PORTABLE	
Dimension	600x271x135 mm
Weight	9 Kg
Material	Plastic Metals Wood Painted
Certifications	ISO 9001

ADP120160B - BENCHTOP	
Dimension	435x254x500 mm
Weight	28,5 Kg
Material	Plastic Metals
Certifications	ISO 9001

ADP 120160DEEP

High quality, deep industrial marking machine.

Compact and efficient, ADP120160 is the most versatile system for deep marking on metals and alloys and, above all, painted materials. Marking area 120x160mm.

FOR INTEGRATION

OPTIONAL:

- Base and column available for use in the "benchtop" version.
- Standard height 500 mm.
- Other heights available upon request



TWO UNIVERSAL CONTROLLERS AVAILABLE:

- AC500 7 "color graphic touch screen with talking icons
- Ethernet, RS232-485, Usb, I / O connections
- AC250 basic version, with connection to PC or stand alone up to 8 programs

USER FRIENDLY MULTILINGUAL SOFTWARE:

- Management of serial numbers, texts, basic geometric figures, shift and date codes in various formats
- TTF font, 5 × 7 - 7 × 11 - 11 × 16 dot font, OCRA - OCRB, file upload / download, import
- Dxf - Bmp, Query in txt and Csv, Datamatrix and QRcode, scheduled maintenance
- Remote maintenance, 64MB internal hard memory



AVAILABLE PINS

Controlled dot	12 mm 18 mm
Cartridge controlled dot	12 mm 18 mm



SISTEMA PER MARCARE A MICROPUNTI CON:

- Pneumatic pin with spring return, and electric pin with solenoid
- Marking version with controlled dot for deep and fast marking or vibrating dot for fast and high quality marking - 6 different standard pins available for the CONTROLLED DOT version
- 2 different standard pins for the VIBRATING version
- 1 electric pin

ADP120160 - FOR INTEGRATION

Dimension	365x271x125 mm
Weight	8,5 Kg
Material	Plastic Metals Wood Painted
Certifications	

ADP120160B - BENCHTOP

Dimension	435x254x500 mm
Weight	28,5 Kg
Material	Plastic Metals Wood Painted
Certifications	ISO 9001

ADP 300400

Dot Peen marking on anodized aluminum, burnished metals, cardboard, ceramic, ebony, wood, metals and alloys, hard plastics, polycarbonate, silicon, painted and glass.

Thanks to the very versatile software and to the available I / O signals, the ADP model is particularly suitable for industrial integrations, network systems, customizations in production data and controls.



FOR INTEGRATION



OPTIONAL:

- Base and column available for use in the "benchtop" version.
- Standard height 500 mm.
- Other heights available upon request



TWO UNIVERSAL CONTROLLERS AVAILABLE:

- AC500 7 "color graphic touch screen with talking icons
- Ethernet, RS232-485, Usb, I / O connections
- AC250 basic version, with connection to PC or stand alone up to 8 programs



USER FRIENDLY MULTILINGUAL SOFTWARE:

- Management of serial numbers, texts, basic geometric figures, shift and date codes in various formats
- TTF font, 5 × 7 - 7 × 11 - 11 × 16 dot font, OCRA - OCRB, file upload / download, import
- Dxf - Bmp, Query in txt and Csv, Datamatrix and Qrcode, scheduled maintenance
- Remote maintenance, 64MB internal hard memory



AVAILABLE PINS	
Vibrated dot	3 mm 4 mm
Controlled dot	3 mm 3 mm XL 3 mm stroke + 20 mm 6 mm 6 mm XL 12 mm
Vibrated dot cartridge	3 mm with spring 4 mm with spring
Cartridge controlled dot	3 mm 3 mm stroke + 20 mm 6 mm 12 mm



DOT PEEN MARKING SYSTEM WITH:

- Pneumatic pin with spring return, and electric pin with solenoid
- Marking version with controlled dot for deep and fast marking or vibrating dot for fast and high quality marking
- 6 different standard pins available for the CONTROLLED DOT version
- 2 different standard pins for the VIBRATING version
- 1 electric pin

ADP300400 - FOR INTEGRATION	
Dimension	513x424x147 mm
Weight	21 Kg
Material	Plastic Metals
Certifications	ISO 9001

ADP300400 - BENCHTOP	
Dimension	764x420x648 mm
Weight	45 Kg
Material	Plastic Metals
Certifications	ISO 9001

ASM 6090

The quietest and the fastest solution for marking on metals and plastics.

It provides a large marking area in a very light and compact technology unit. The piston, specially designed by Automator, pushes the pin deep into the material to be marked continuously.



FOR INTEGRATION



OPTIONAL:

- Base and column available for use in the "benchtop" version.
- Standard height 500 mm.
- Other heights available upon request



USER FRIENDLY MULTILINGUAL SOFTWARE:

- Management of serial numbers, texts, basic geometric figures, shift and date codes in various formats
- TTF font, 5 × 7 - 7 × 11 - 11 × 16 dot font, OCRA - OCRB, file upload / download, import
- Dxf - Bmp, Query in txt and Csv, Datamatrix and Qrcode, scheduled maintenance
- Remote maintenance, 64MB internal hard memory



AVAILABLE PINS	
Scribe pin	6 mm ASM40150
Scribe cartridge	6 mm ASM40150



SCRIBE MARKING SYSTEM CONSISTING OF:

- Marking head, with pin/ cartridge and 4m head
- Controller cable
- Universal AC500 controller
- Air filter
- Scribe pin

ASM6090 - FOR INTEGRATION	
Dimension	170x200x194 mm
Weight	6 Kg
Material	Plastic Metals Other materials
Certifications	ISO 9001

ASM6090 - BENCHTOP	
Dimension	436x254x125 mm
Weight	26 Kg
Material	Plastic Metals Other materials
Certifications	ISO 9001

ASM 40150

The best solution for silent and continuous marking on metals and hard plastics.

The piston, specially designed by Automator, pushes the pin deep into the material to be marked continuously.

FOR INTEGRATION



AVAILABLE PINS	
Scribe pin	16 mm ASM40150
Scribe cartridge	16 mm ASM40150



ASM40150 - FOR INTEGRATION	
Dimension	360x200x270 mm
Weight	19 Kg
Material	Metals Plastic Other materials
Certifications	ISO 9001

ASM40150 - PORTABLE	
Dimension	764x420x648 mm
Weight	59 Kg
Material	Metals Other materials
Certifications	ISO 9001



OPTIONAL:

- Base and column available for use in the "benchtop" version.
- Standard height 500 mm.
- Other heights available upon request



THE PINS:

PNEUMATIC CONTROLLED DOT
Air actuated / spring return mechanism



ELECTRIC
With solenoid valve



PNEUMATIC VIBRATING PIN
Air actuated / spring return mechanism



SCRIBE PIN
Deep and silent scribe marking



ACCESSORIES:

THETA AXIS

Software-driven rotation axis for circumferential marking



XY AXIS

Stroke 300mmx300mm Stepper motor, maximum supported weight 40kg



ELECTRIC Z AXIS

Available in standard height from 500 mm up to 1200 mm



RUBBER CAP FOR ADP HEADS

To protect the marking head from infiltrations



MARKING START PEDAL

With communication cable and adapter



RADIAL EXTENSION KIT

Extension bracket for 85 and 134 mm horizontal type cartridges



AXIAL EXTENSION

Extension for 40mm cartridge

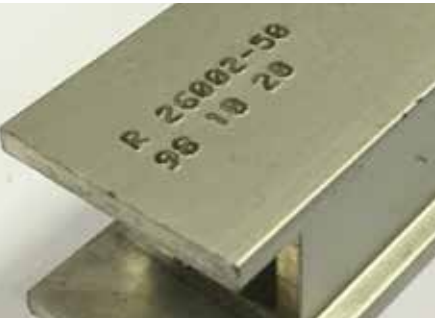
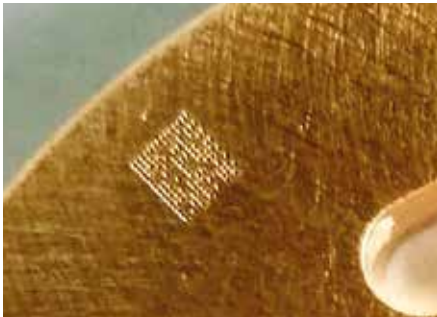
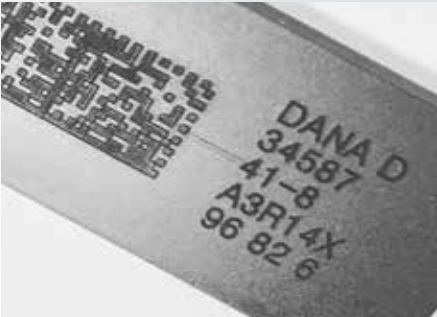
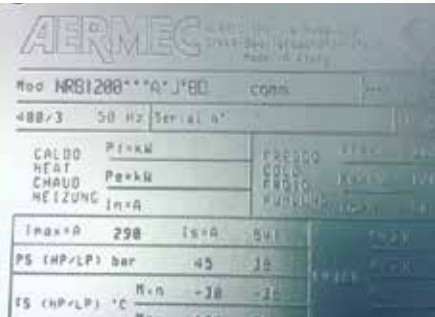


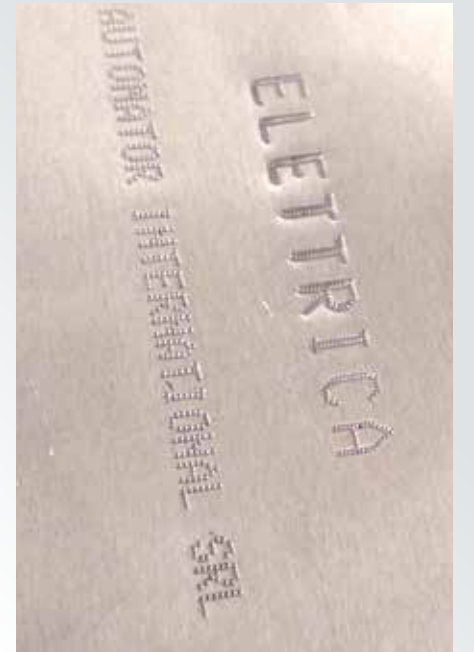
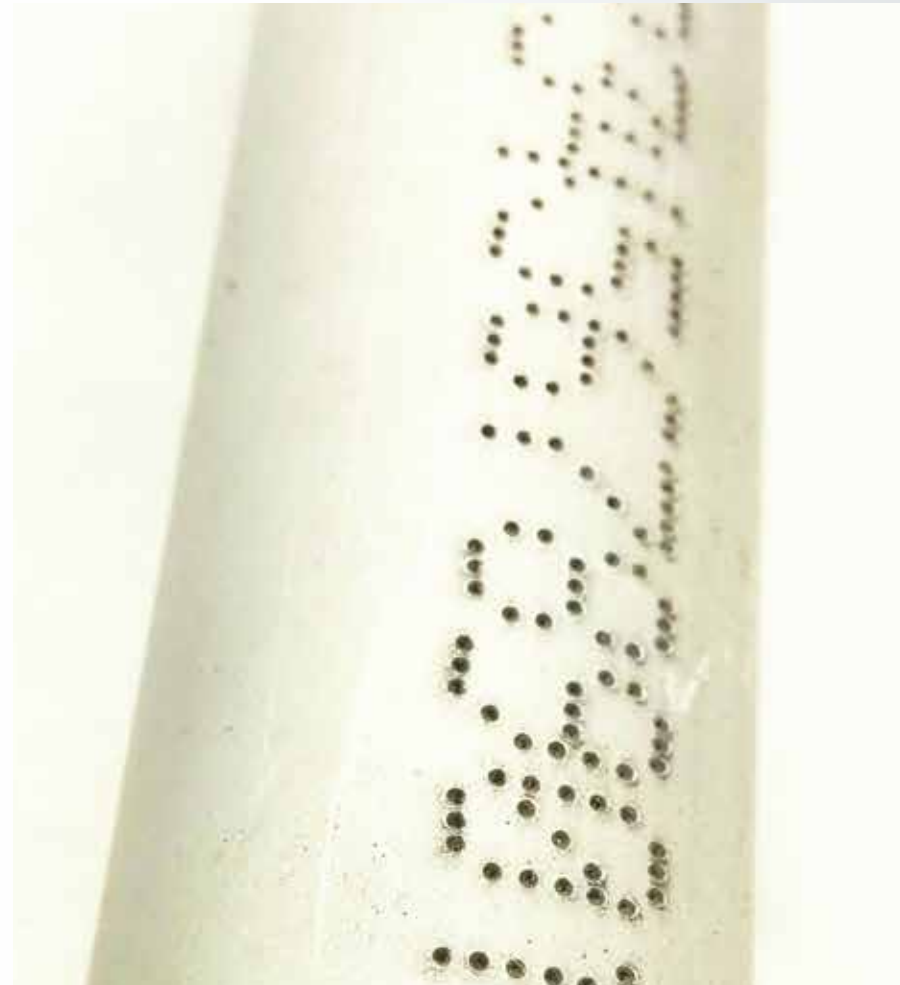
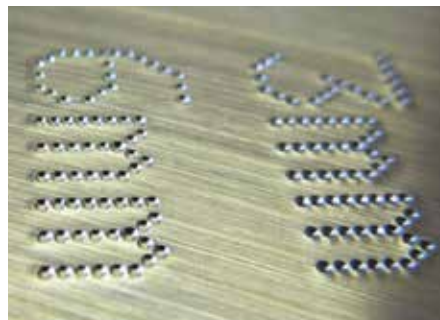
COMMAND BOX

With start / stop buttons and cable



MARKINGS ON ALL SURFACES







Automator Marking Systems Srl

20094 Corsico (Milano) - Italy
Via Meucci, 8
Tel. +39 02 48601445
Fax +39 02 48601503

www.automator.com

